



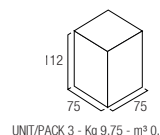
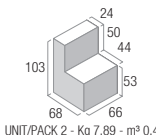
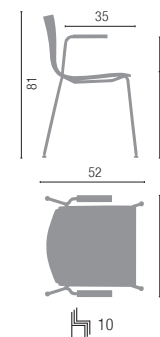
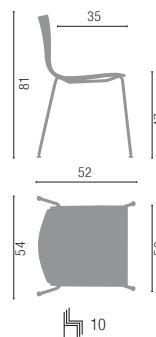
Slim

4-legs



technical data

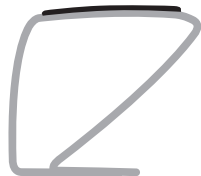
4-legs

4-legs
arm.

UNIT/PACK 2 - Kg 7,89 - m³ 0,4

UNIT/PACK 3 - Kg 9,75 - m³ 0,5915

options

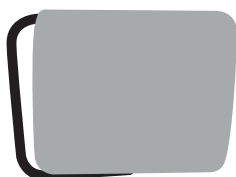


XB030 - chromed
XB026 - white
XB035 - black

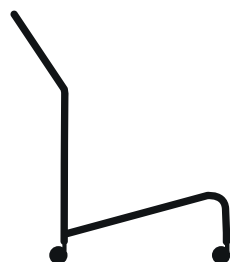
XB040 - chromed, uph. pad
XB039 - white, uph. pad
XB042 - black, uph. pad



XC017 - cushion



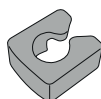
writing tablet
XS003



trolley
XA009



linking device
XA001 - seat
XA002 - armrest



stacking device
XA007

base



Base 4 gambe vern. nera, bianca, cromata
4-legs black, white painted or chromed base
Piè. 4 pieds verni noir, blanc ou chromé
4-Fuß Gestell schwarz, weiss lackiert oder verchromt

feet



Base 4 gambe con braccioli vern.
nera, bianca, cromata
*4-legs black, white painted or chromed
base with arms*
Piè. 4 pieds verni noir, blanc ou
chromé avec acc.
*4-Fuß Gestell schwarz, weiss lackiert
oder verchromt mit Arm.*

Slim

Sled base

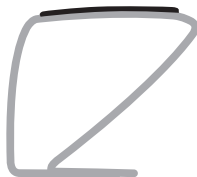


technical data

options



XB030 - chromed
XB026 - white
XB035 - black



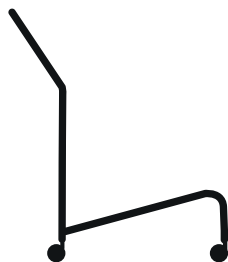
XB040 - chromed, uph. pad
XB039 - white, uph. pad
XB042 - black, uph. pad



XC017 - cushion



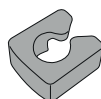
writing tablet
XS003



trolley
XA009

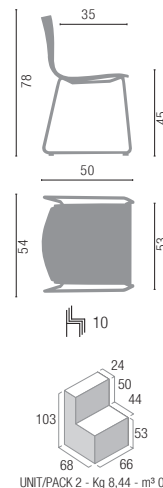


linking device
XA001 - seat
XA002 - armrest

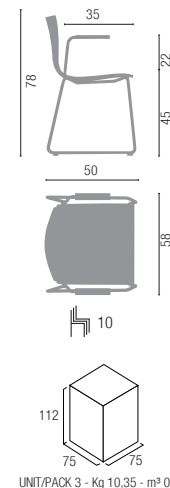


stacking device
XA007

sled base



sled base arm.



base



Base a slitta vern. nera, bianca, cromata
Black, white painted or chromed sled base
Pièt. luge verni noir, blanc ou chromé
Kufengestell schwarz, weiss lackiert oder verchromt

feet



Base 4 gambe con braccioli vern.
nera, bianca, cromata
*4-legs black, white painted or chromed
base with arms*
Pièt. 4 pieds verni noir, blanc ou
chromé avec acc.
*4-Fuß Gestell schwarz, weiss lackiert
oder verchromt mit Armf.*

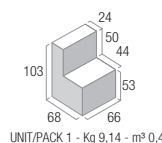
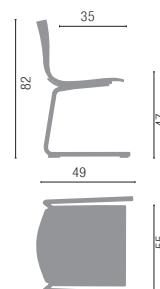


Slim

Reverse Cantilever



reverse
cantilever



technical data

options



XC017 - cushion

base



feet



Base mensa vern. nera, bianca, cromata
Chromed, black or white painted reverse cantilever base
 Piét. appui sur table verni noir, blanc, chromé
C-Gestell schwarz, weiss, lackiert oder verchromt

Slim

4-legs
Sled base
Reverse Cantilever



1. STRUTTURA:

Monoscocca in tecnopolimero, finitura RAL o imbottita con spugna e rivestita in tessuto, con struttura di sostegno in tubo tondo d'acciaio, Ø 16mm, con o senza braccioli, finitura cromata (15µm) o verniciata a polveri

2. BASE:

- Base 4 gambe in tubo d'acciaio Ø 16mm, con o senza braccioli, finitura cromata (15µm) o verniciata a polveri
- Base a slitta in tubo d'acciaio Ø 16mm, con o senza braccioli, finitura cromata (15µm) o verniciata a polveri
- Base mensa in tubo d'acciaio Ø 20mm, finitura cromata (15µm) o verniciata a polveri

3. PIEDINI:

- Piedini snodati in poliamide, finitura cromata (15µm), nera o bianca
- Tappi in polipropilene, finitura nera o bianca
- Tappi antiribaltamento in poliamide, finitura nera

4. BRACCIOLI:

Bracciolo triangolare in tondo d'acciaio, Ø 12mm, finitura cromata (15µm) o verniciata a polveri (imbottito e rivestito in tessuto)

1. STRUCTURE:

Engineering polimer monocoque, ral finish or foam padded and upholstered. Round steel bar structure Ø 16mm, with or without armrests, chromed finish (15µm) or powder coated

2. BASE:

- 4 legs base, Ø 16 mm steel tube, with or without armrest, chromed finish (15µm) or powder coated
- Cantilever base, Ø 16 mm steel tube, with or without armrest, chromed finish (15µm) or powder coated
- Reverse cantilever base Ø 20mm steel tube, chromed finish (15µm) or powder coated

3. FEET:

- Leveler glides in polyamide, chromed finishes (15µm), black or white
- polypropylene plugs, black or white finish
- polyamide anti overturning plugs, black finish

4. ARMREST:

Steel round bar Ø 12 mm, triangular armrest, chromed finish (15µm) or powder coated. Padded and fabric upholstered

1. STRUCTURE:

Monocoque en polymère technique, finition RAL ou rembourrée de mousse et tapissée. Structure de support en tube d'acier, Ø 16mm, avec ou sans accoudoirs, finition chromé (15µm) o verni époxy

2. PIÈTEMENT:

- Piètement 4 pieds en tube d'acier Ø 16mm, avec ou sans accoudoirs, finition chromé (15µm) ou verni époxy
- Piètement luge en tube d'acier Ø 16mm, avec ou sans accoudoirs, finition chromé (15µm) ou verni époxy
- Piètement luge inversé en tube d'acier Ø 20mm, finition chromé (15µm) o verni époxy

3. PATINS:

- Patins articulés et polyamide, finition chromée (15µm), noir ou blanc
- Tampons en polypropylène, finition noir ou blanc
- Tampons anti renversement en polyamide, finition noir

4. ACCOUDOIR:

Accoudoir triangulaire en tige d'acier, Ø 12mm, finition chromé (15µm) ou verni époxy (manchette rembourrée et tapissée)

1. STRUKTUR:

Technopolymer Schale, RAL Farben oder ausgepolstert mit Schwamm und Stoffbezug, Rund-Stahlrohrgestell Ø 16 mm, mit oder ohne Armlehnen, verchromt (15 µm) oder pulverbeschichtet

2. GESTELL:

- 4-Fuß Gestell, Ø 16mm Stahlrohr, mit oder ohne Arml. verchromt (15µm) oder pulverbeschichtet
- Kufengestell, Ø 16mm Stahlrohr, mit oder ohne Arml. verchromt (15µm) oder pulverbeschichtet
- C-Gestell, Ø 20mm Stahlrohr, verchromt (15µm) oder pulverbeschichte

3. GLEITER:

- Gelenkgleiter aus Polyamid, verchromt (15 µm), schwarz oder weiss
- polyamid gleiter, schwarze oder weisse
- Schwarze Polyamid Antirollgleiter

4. ARMLEHNE:

Feste dreieckige Armlehne aus Stahlstab, Ø 12 mm, verchromt (15 µm) oder pulverbeschichtet, ausgepolstert mit Stoffbezug



ID 1111209613